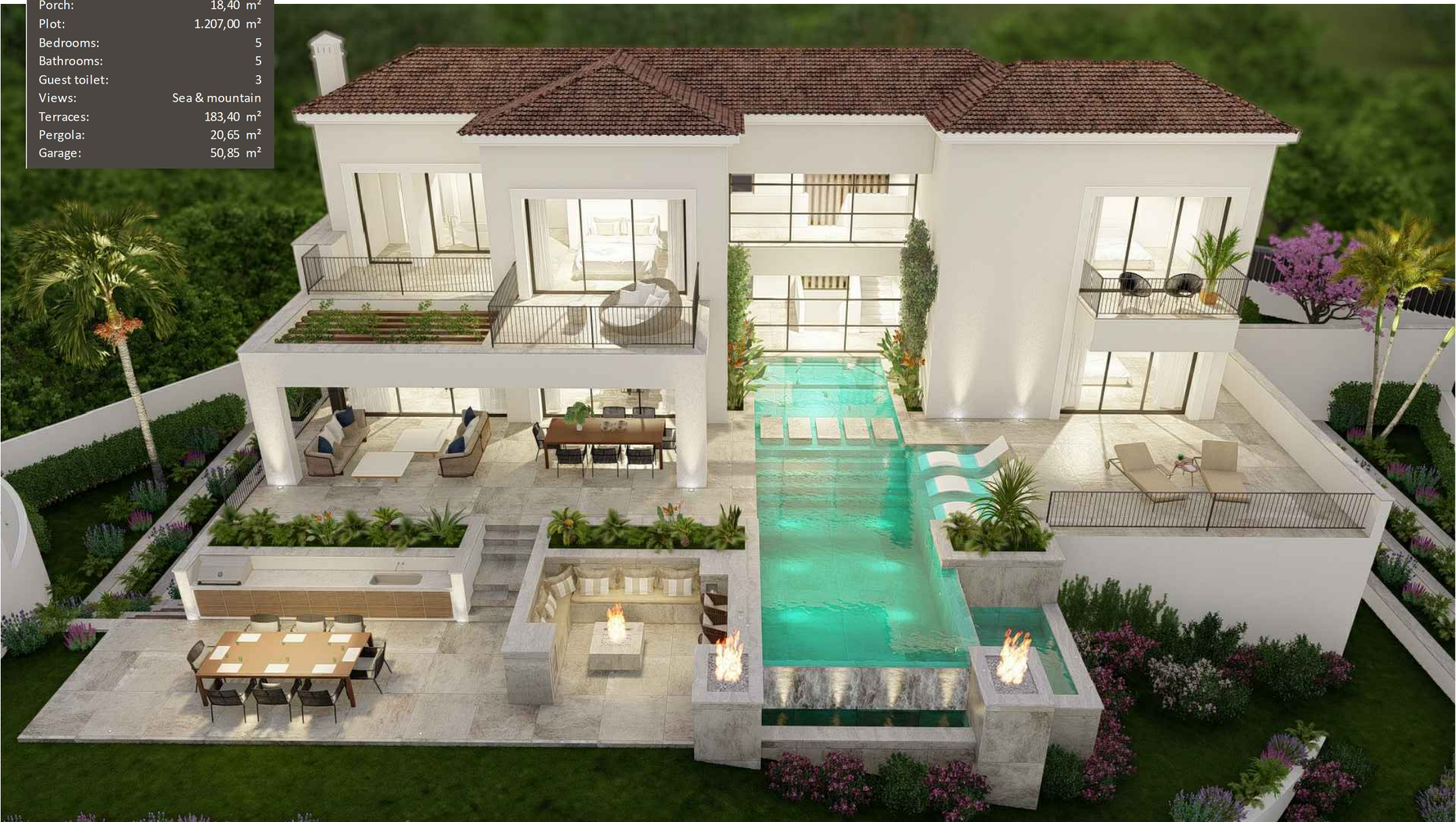


Total built area:	668,45 m ²
Porch:	18,40 m ²
Plot:	1.207,00 m ²
Bedrooms:	5
Bathrooms:	5
Guest toilet:	3
Views:	Sea & mountain
Terraces:	183,40 m ²
Pergola:	20,65 m ²
Garage:	50,85 m ²



SPANISH CORNER

Villa 17



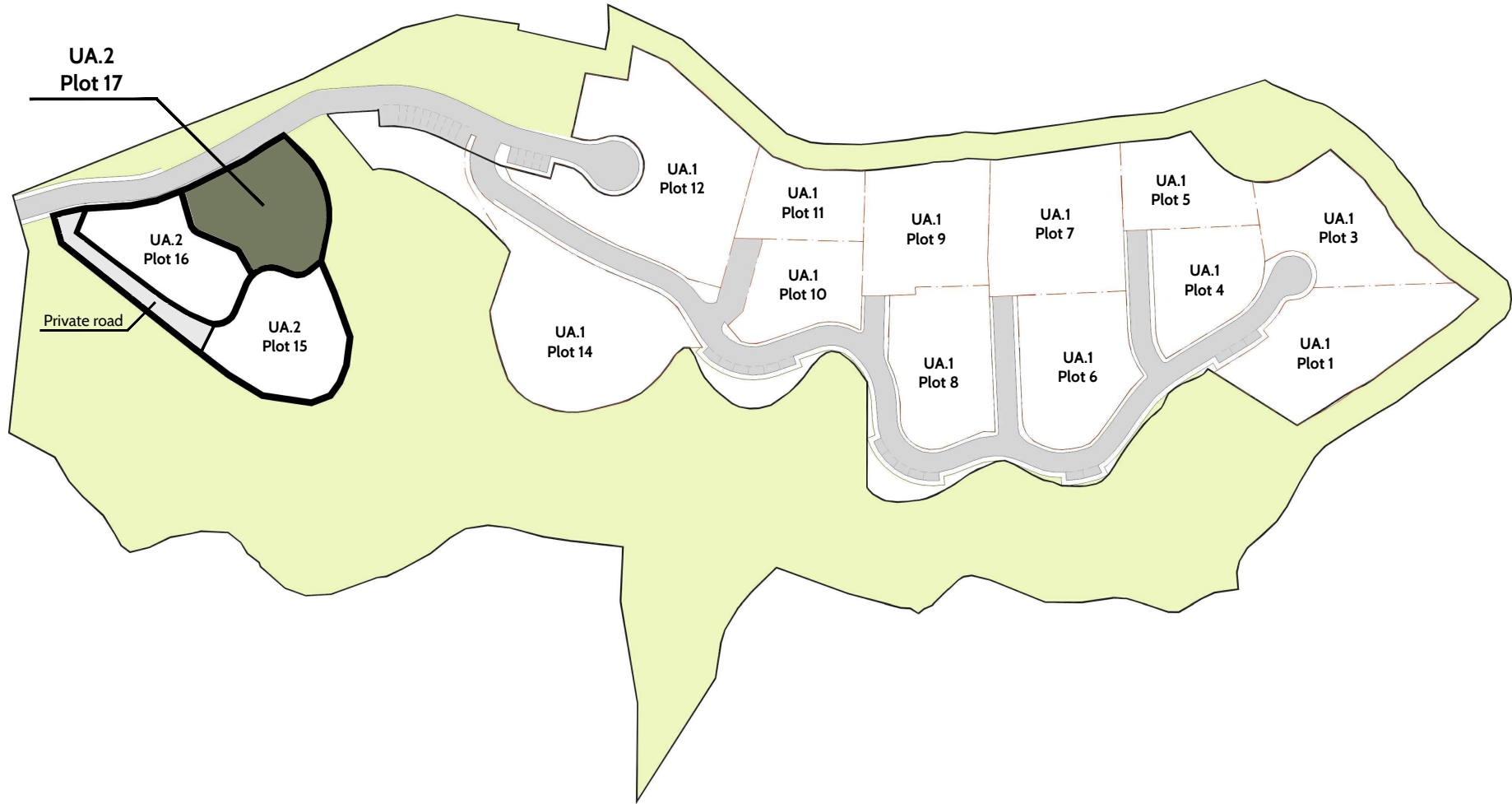
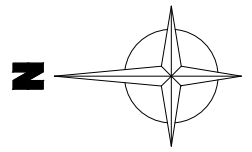
Views



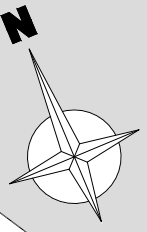
SPANISH CORNER

Villa 17

PLOT N°	PLOT AREA (m ²)
17	1.207



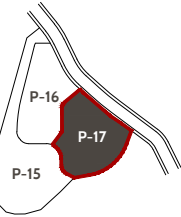
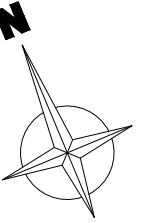
-1 LEVEL	
Built area	359,85 m ²
Porch	0,00 m ²
Terraces	22,55 m ²



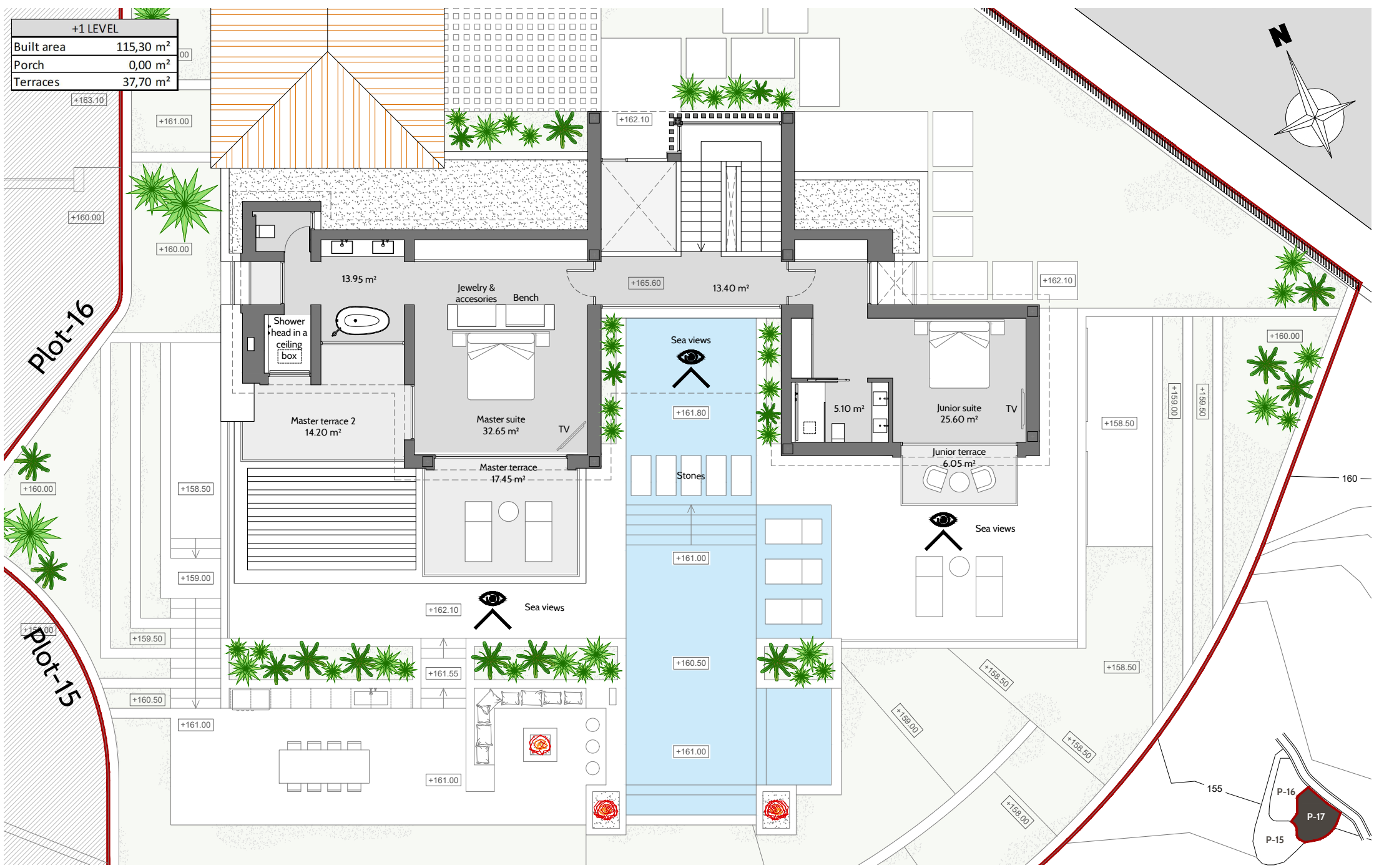
0 LEVEL	
Built area	193,30 m ²
Porch	18,40 m ²
Terraces	123,15 m ²
Pergola	20,65 m ²
Garage	50,85 m ²

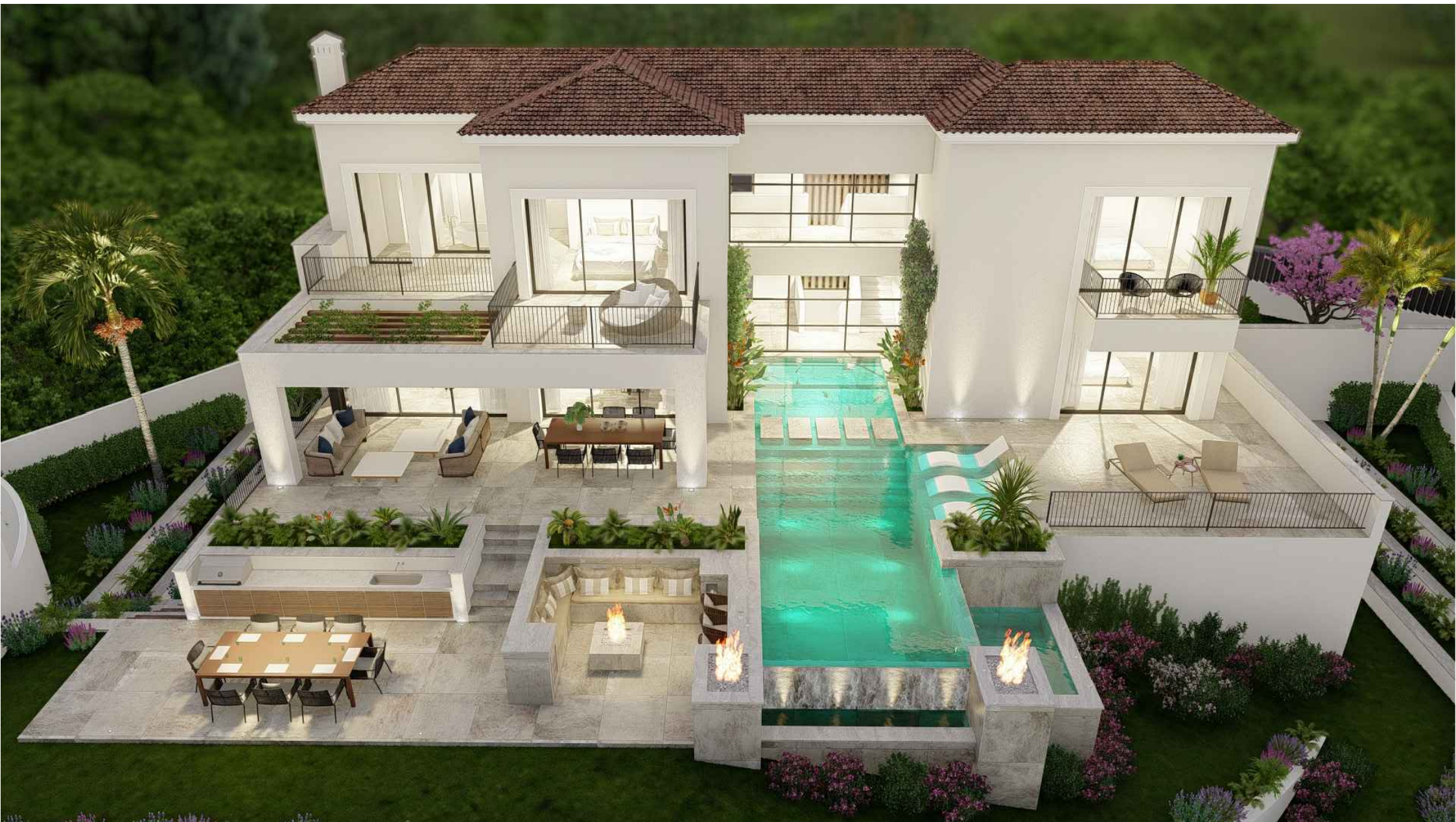


Total built area:	668,45 m ²
Porch:	18,40 m ²
Plot:	1.207,00 m ²
Bedrooms:	5
Bathrooms:	5
Guest toilet:	3
Views:	Sea & mountain
Terraces:	183,40 m ²
Pergola:	20,65 m ²
Garage:	50,85 m ²



+1 LEVEL	
Built area	115,30 m ²
Porch	0,00 m ²
Terraces	37,70 m ²





SPANISH CORNER

Villa 17



SPANISH CORNER

Villa 17



SPANISH CORNER

Villa 17



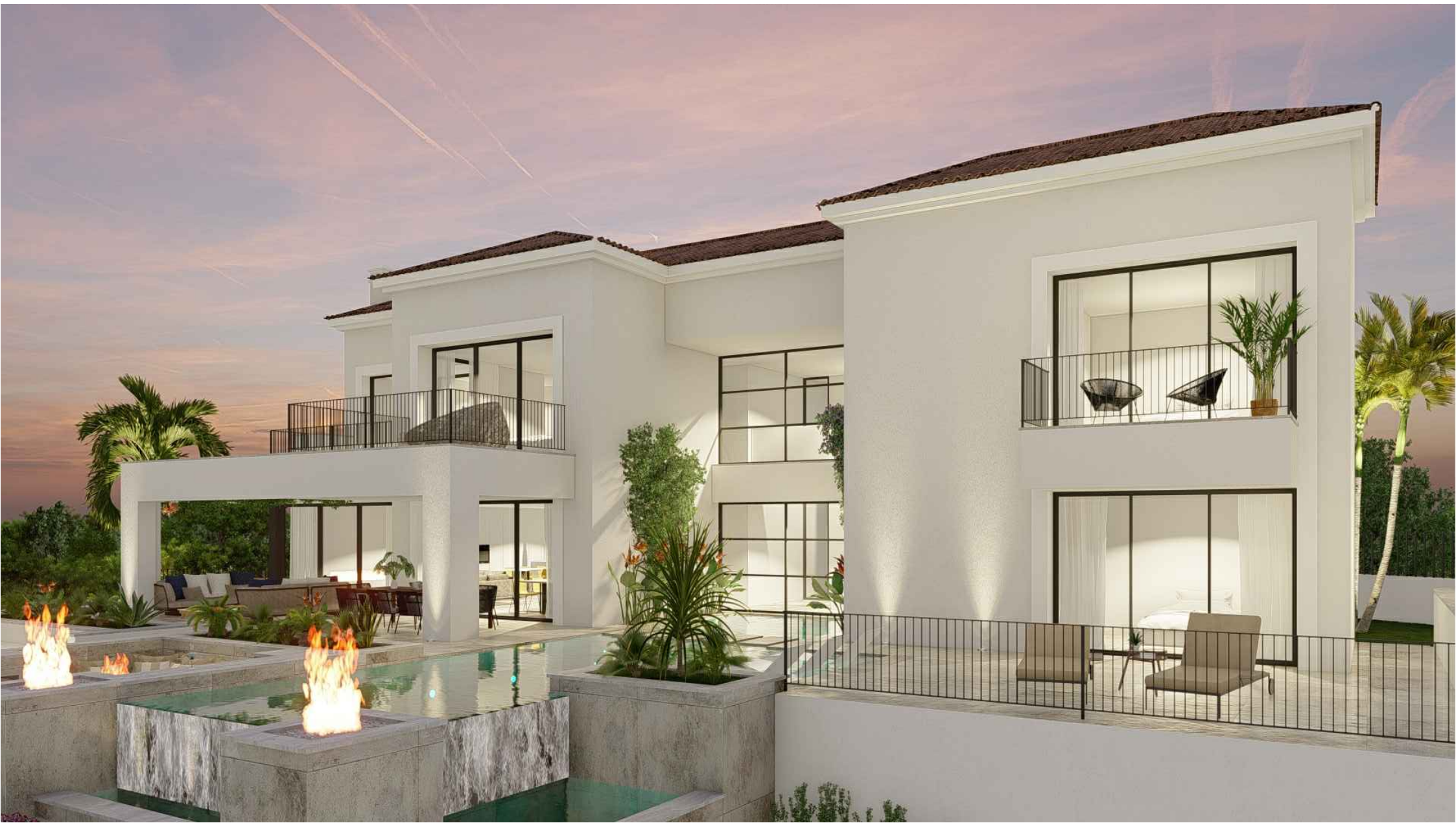
SPANISH CORNER

Villa 17



SPANISH CORNER

Villa 17



SPANISH CORNER

Villa 17



SPANISH CORNER

Villa 17



SPANISH CORNER

Villa 17